

ELITE / INFINITY

Cutting Edge Digital C-Arm
for High Precision with
Flat Panel based Technology!



Introducing

ELITE / INFINITY C-ARM

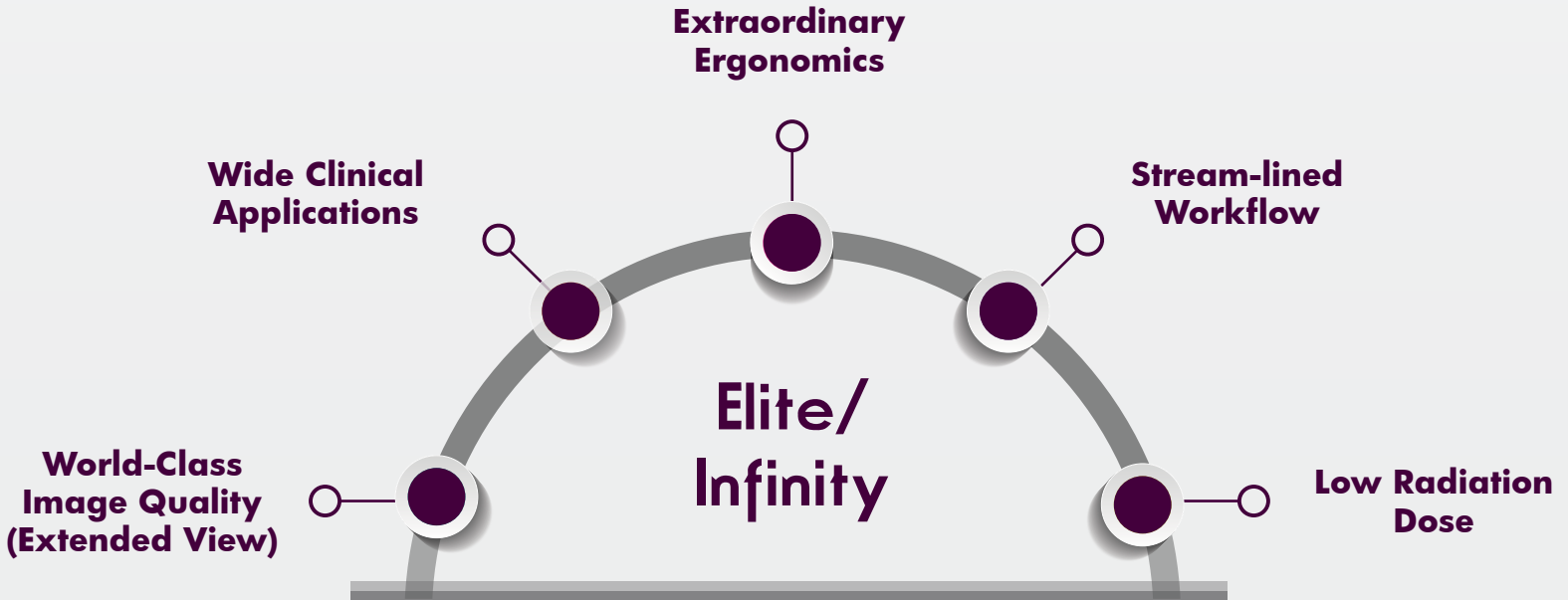
Uncompromised Image Quality
with Edge to Edge Visibility!



Quintessential for a Hybrid OR

An Innovative and Intuitive Digital C-Arm that addresses both Clinical Value and Overall Workflow. Elite/Infinity offers Versatility, Robust Performance and High Precision Surgical Imaging.

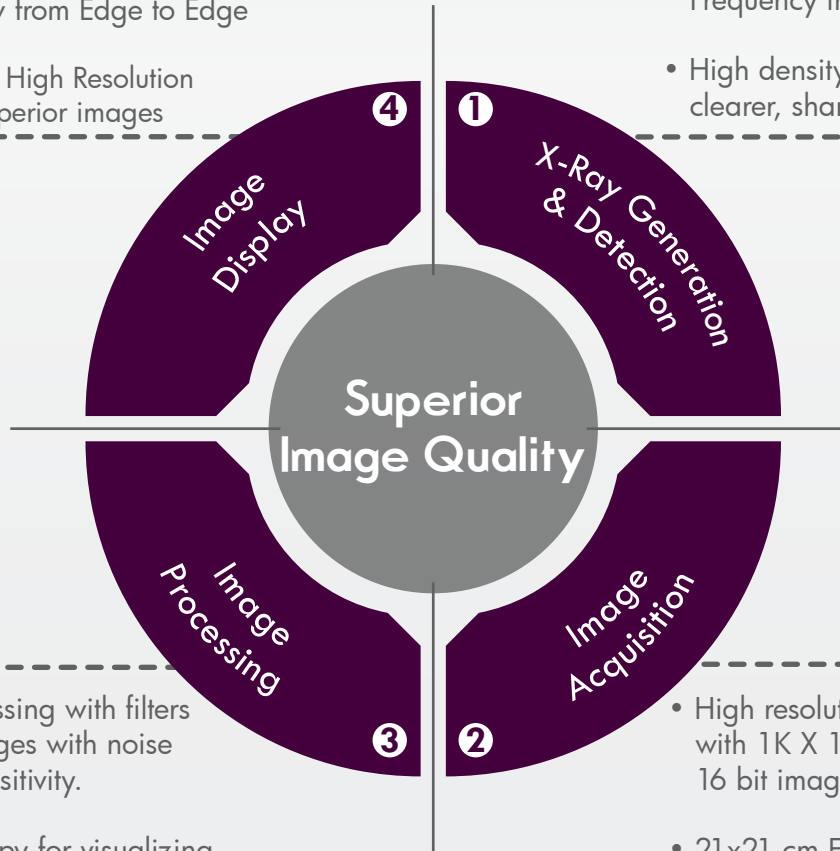
Elite/Infinity is the perfect addition for your team. With low dose fluoroscopy and Flat Panel Detector technology, Elite/Infinity is an ideal solution for your Hybrid OR.



Superior Image Quality

- Delivers an image free of geometrical distortion and offers a higher grayscale resolution, making the various anatomical structures visible with greater accuracy.
- Extended View from Edge to Edge
- Dual 19 Inches High Resolution monitors for superior images

- World-Class 5 kW(Elite) & 3.5 kW(Infinity) X-Ray Generator with ABS for optimized dose
- Super Harmonic Controlled Frequency from 40kHz to 80kHz
- High density anti-scatter grid for clearer, sharper images



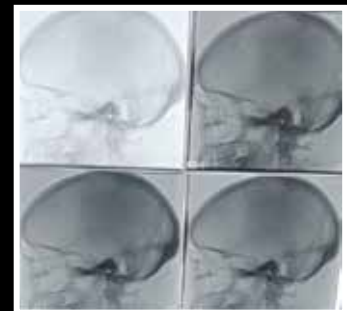
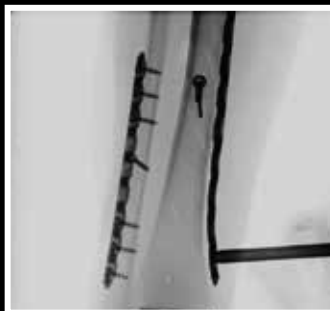
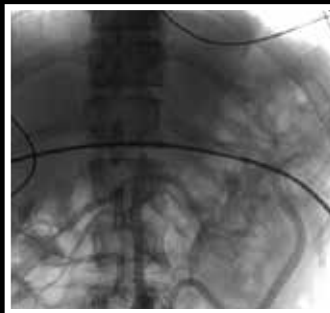
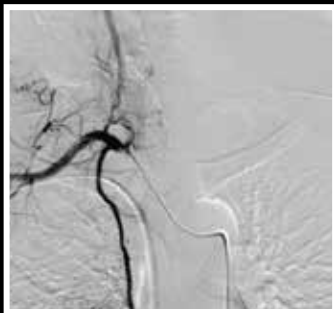
- Coherent image processing with filters that produce crisp images with noise reduction and high sensitivity.
- High contrast fluoroscopy for visualizing moving objects with live imaging without any delay
- Pre and Post process features for image rotation, horizontal and vertical mirror, zoom and invert

- High resolution digital image acquisition with 1K X 1K Flat Panel Detector with 16 bit image processing
- 21x21 cm Flat Panel Detector that enables better acquisition with direct conversion to image with curtailed conversion process that results in lesser data loss

Wide Clinical Applications

- ✓ Wide Intraoperative imaging Applications in Orthopaedics, Trauma surgery, Urology, Pain management, Gastro, Neuro, PMR, Interventional Radiology and peripheral vascular surgery.
- ✓ DSA - Digital Subtraction Angiography is used in Vascular diagnostics. It is very useful for the finding of blockage or aneurysm in arteries or veins. It helps the doctors to get useful image by subtracting all background from the main required image. The main use of it is in Peripheral and Neuro cases.
- ✓ Road Mapping Feature allows surgeons to find the path to reach the target location branches during the surgery.

Extraordinary Image Quality



Extraordinary Ergonomics

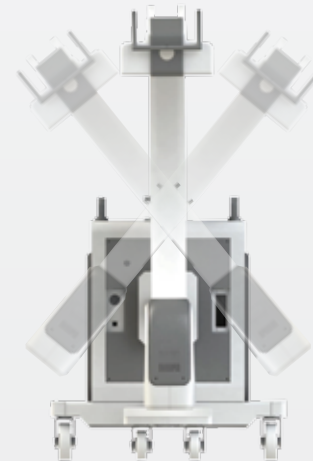
Orbital Movement : 125° orbital rotation
Free Space: 780 mm
SID: 980 mm



Horizontal Movement: 210 mm horizontal C-Arm run



Axial Rotation: 270° on each side



Wig Wag: 12.5° on each side C-Arm swivelling with
manual brake for locking



Lightweight and compact workstation, assisting in clear communication.

21x21 Flat Panel Detector with excellent DQE

Comfortable viewing of Images with extending, tilting and rotating monitor

Open design that enhances line of sight



Storage bay for printer and accessories

PU Wheels to reduce the noise and enable smooth movement on every type of floor (Hard Surface, Epoxy Coated floor, Matte finish floors)

Efficient foot brake to lock the wheel movement or steady positions.

Streamlined Workflow



Ease of Use

Advanced processor with Windows OS

User friendly Workstation interface for easy & faster workflow

ABS or ADRC mode enables to use the equipment in fully automatic mode

Semi Auto & Fully Auto mode for ease of operations and clear button indication

Radiography mode allows for Digital exposure with wide range of factors

Better Heat dissipation in the X-Ray Tube for increased throughput



Comprehensive Image Management

Real time image rotation and Real time image capture

Recording of images as 'Last image saved' and Cine loop

Length and Angle stenosis measurement

Text annotation



Efficient Storage

Storage of last hold image and cine loop permanent storage more than 1,00,000 images

USB memory stick and DVD writer support for image backup

DICOM option that enables transmitting, integration and sharing of data between different medical imaging devices

Printer connectivity with paper and film printers



Advanced Connectivity

PACS

HIS RIS



Flexible Power Management

Extra power for complex cases with Online UPS which keeps a steady and unchanged flow of power without need for power transfer switch.

Active cooling to prevent overheating during long procedures. External Fan is available to increase the cooling with Heat Sink to cool down the tube during surgery



Optimized Radiation Dose

- Low dose fluoroscopy; getting optimal image with just the right dose.
- User friendly dose adjustment with Automatic parameter selection for best image with low dose and Manual dose reduction in low dose mode. Semi auto mode to select proper mA with less dose for better image quality.
- Dedicated function to reduce exposure for paediatric procedures. Low dose fluoroscopy mode by cutting down mA by half on all kV factors to reduce patient dose while maintaining excellent image quality.

Reliable Service Support

- Well trained Service team to ensure your equipment uptime at optimal level
- Modular design for ease of use and quick remote technical support and diagnosis
- Display for self-diagnostic maintenance & software for online support

Elite/Infinity

Quintessential for a Hybrid OR







www.kiranxray.com | www.trivitron.com
kiran@kiranxray.com

 /Trivitronindia

 /Trivitronindia

 /company/trivitron-healthcare

 /TrivitronHealthcare