

On A **Global Mission** With A **Local Heart**

Speaking your language across 180 countries



**KIRAN**  
A Division of **TRIVITRON** Healthcare

[www.kiranxray.com](http://www.kiranxray.com) | [www.trivitron.com](http://www.trivitron.com)  
[kiran@kiranxray.com](mailto:kiran@kiranxray.com)

 /Trivitronindia  /Trivitronindia  /company/trivitron-healthcare  /TrivitronHealthcare



**KIRAN**  
A Division of **TRIVITRON** Healthcare

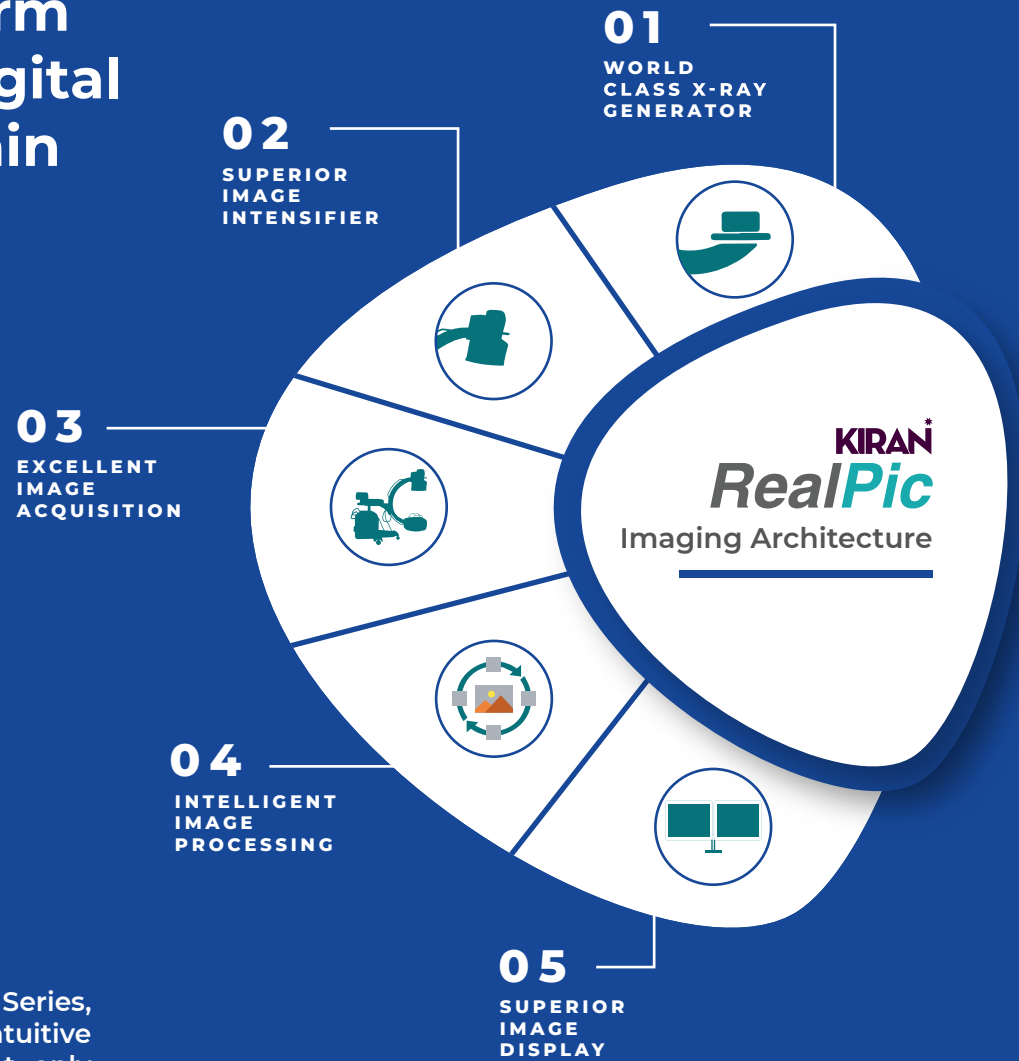
## Surgical C-Arm Series

- Powered with -

**1K X 1K Digital**  
IMAGING CHAIN



# Introducing Surgical C-Arm with 1k 1k Digital Imaging Chain



With Kiran's Elite & Infinity Series, you get Innovative & Intuitive Imaging Systems that not only deliver exceptionally sharp images but improved operability.

The Elite/Infinity Series features 1K x 1K Digital Imaging Chain that helps you obtain enhanced high resolution images which highlight even the tiniest details. With intuitive image processing software, Elite/Infinity delivers consistent high contrast images

- Wide Coverage with 9" Image Intensifier
- Minimum Scattered Radiation with Superior Anti-Scatter Grid
- Coherent Image Processing Filters for noise reduction
- High Resolution Monitors



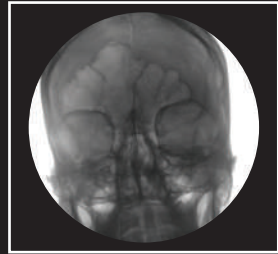




Cervical Spine Lateral



Cervical Spine AP View



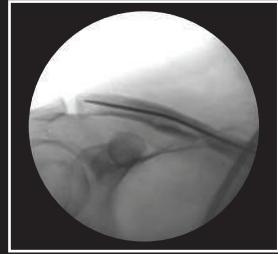
Paranasal Sinus



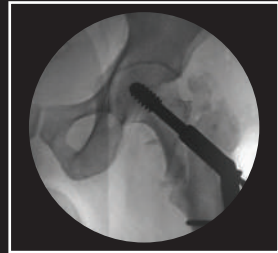
Shoulder Joint



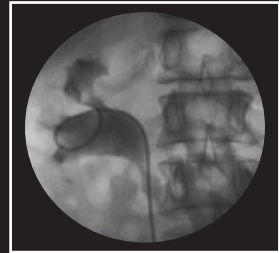
HSG Procedure



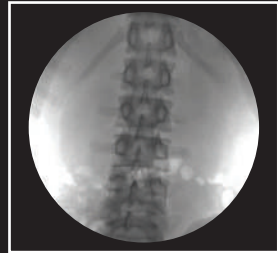
Clavicle



Hip Joint/Head of Femur



Nephrogram



Abdomen



- Orbital Movement: 125°
- Free Space: 780 mm(±10 mm)
- SID: 980 mm(±10 mm)



- 200 mm (±10 mm) Horizontal C-Arm run, with manual brake for locking



- 270° C-Arm rotation on each side, with manual brake for locking



- 12.5° (±1°) C-Arm swivel on each side with manual brake for locking

High Quality Image Intensifier for High Contrast Imaging

1

Compact & Light-weight C-Arm Design

2

Lock & Lever designed for ease of use & precise positioning

3

Process oriented user-friendly keypad

4

Foot Switch for Ease of Image Acquisition

5



Rotating, Tilting, Extending High Resolution 19" Dual Monitors

6

Last Image hold feature

7

Storage Bay for Printer & Accessories

8

Key Features	Elite 1k x 1k	Infinity 1k x 1k
Output Power	5.0 kW	3.5 kW
Normal Mode Current	0.6 - 5.5 mA	0.6 - 4.5 mA
Pediatric Mode Current	0.1 - 2.5 mA	0.1 - 2.25 mA
Boost Mode Current	0.8 - 12 mA	0.8 - 8 mA
Snapshot Mode Current	0.8 - 12 mA	0.8 - 8 mA
Radiography Mode Current	35 - 80 mA	25 - 70 mA
Imaging Resolution	1K X 1K	1K X 1K
Monitor	19" LED Medical grade/ 32" High Resolution HD Monitor	19" LED Medical grade 32" High Resolution HD Monitor
Field of View	23 cm/9"	23 cm/9"
Free Space	80 cm	80 cm
Immersion Depth	68 cm	67 cm
Orbital Movement	125°	125°
	(+90° to -35°)	(+90° to -35°)
Image Storage	PC Based Memory - Storage depends on Hard Disk Space	PC Based Memory - Storage depends on HD Space more than 10,000 images
Portability of Image	USB drive, LAN connectivity & CD Writer	USB drive, LAN connectivity & CD Writer, DICOM - optional

## World-Class Customer Support Precisely on-time for Enhanced Uptime!

Uptime of your Medical Equipment is important to your Productivity & ROI just as Precision is crucial in delivering the right Clinical Value to your patient. Our range of Service Contracts are tailored to meet your needs, ensuring that your medical equipment is optimally maintained and total cost of ownership is lowered



For Service Support

Please Call

9840080008

**EASE OF USE**

- Advanced processor with Windows OS
- User friendly Workstation interface for easy & faster workflow
- ABS or ADRC mode enables to use the equipment in fully automatic mode
- Semi Auto & Fully Auto mode for ease of operations and clear button indication
- Radiography mode allows for Digital as well as cassette exposure with wide range of factors
- Rotating anode enables better Heat dissipation in the X-Ray Tube for increased throughput

**COMPREHENSIVE IMAGE MANAGEMENT**

- Real time image rotation and Real time image capture
- Recording of images as 'Last Image saved' and Cine loop
- Length and Angle stenosis measurement
- Text annotation

**EFFICIENT STORAGE**

- Storage of last hold image and cine loop permanent storage more than 1,00,000 images
- USB memory stick and DVD writer support for image backup
- DICOM option that enables transmitting, integration and sharing of data between different medical imaging devices
- Printer connectivity with paper and film printers

**ADVANCED CONNECTIVITY**

- PACS
- HIS RIS

**FLEXIBLE POWER MANAGEMENT**

- Extra power for complex cases with online UPS which keeps a steady and unchanged flow of power without need for power transfer switch
- Active cooling to prevent overheating during long procedures. Eternal Fan is available to increase the cooling with Heat Sink to cool down the tube during surgery

